

Let's Knit

Bonus
Christmas
Downloads!



Lovely Llama
Chilly the Reindeer
Jingle & Tinsel Elves
Trio of Soldiers
Cute Penguins

KIDS'
pattern

EXCLUSIVE TO • EXCLUSIVE TO • EXCLUSIVE TO •
Let's knit • EXCLUSIVE TO • EXCLUSIVE TO • EXCLUSIVE TO •

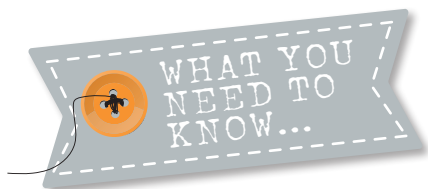
Fa la la la LLAMA

TREAT YOUR YOUNGSTER TO
ZÖE HALSTEAD'S FESTIVE FRIEND

From robins and reindeer to nutcrackers and snowmen, there are so many classic characters to catch up with during the winter season. However, for fans of novelty knits there is none so special as the Christmas Llama. Made using a combination of super-soft and wonderfully vibrant yarns, this toy promises to comfort your little one when they are ready for bed and bring them endless excitement when they are all set for playtime.



Perfect for
PLAY



GREAT FOR IMPROVERS



DK YARN



3.25MM, 3.75MM

MEASUREMENTS & SIZES

Height: 28cm

Length: 24cm

KNIT KIT

Yarn: King Cole Big Value DK, shade (A) 4024 Koala, (B) 4021 Cream, (C) 4034 Fuchsia, (D) 4044 Turquoise, (E) 4056 Orchid, (F) 4049 Lime, (G) 4029 Red, (H) 4033 Pink, (I) 4046 Jade, (J) 4038 Violet, (K) 4020 White, (L) 4039 Purple, (M) 4050 Emerald, one 50g ball of each, (N) King Cole Truffle, shade 4365 Coconut, one 100g ball

Needles: 3.25mm, 3.75mm

Tapestry needle

Safety toy stuffing

Toy safety eyes: black, 9mm, two

Pom-pom maker (optional)

TENSION SQUARE

- 24 sts x 32 rows
- 10cm x 10cm
- Stocking stitch
- 3.25mm needles

- 23 sts x 30 rows
- 10cm x 10cm
- Stocking stitch
- 3.75mm needles

FOR ABBREVIATIONS SEE PAGE 97

ABOUT THE YARN

King Cole Big Value DK is a super-soft, 100% acrylic yarn that can be machine washed and tumble dried. It costs £2.19 per 100g (290m) ball. **King Cole Truffle** is a 100% polyamide fibre that is the perfect choice for cosy knits. It costs £4.79 per 100g (180m) ball. Both yarns are available from theknittingnetwork.co.uk

LUCKY THEM!

Let's Knit Together members had exclusive access to this pattern one week before the magazine hit the shelves. Want to be in on the action? Sign up today from just £1 and you'll receive early access to a pattern from the magazine every month!



Start knitting here...

LEG (make four)

Using 3.25mm needles and yarn A, cast on 11 sts

- Row 1: k3, (kfb, k1) three times, k2. 14 sts
 - Row 2: p
 - Row 3: k3, (kfb, k2) three times, k2. 17 sts
 - Beg with a p row, work six rows in st st
 - K one row
- Change to yarn B
- Beg with a k row, work eight rows in st st
 - Cast off

NOSE

Using 3.25mm needles and yarn B, cast on eight sts

- Row 1: kfb, k2, (kfb) twice, k1, kfb, k1. 12 sts
- Row 2 and all WS rows: p
- Row 3: (kfb, k3, kfb, k1) twice. 16 sts
- Row 5: k2, kfb, k3, kfb, k1, (kfb, k3) twice. 20 sts
- Row 7: k3, kfb, k4, kfb, k1, (kfb, k4) twice. 24 sts
- Row 9: k3, kfb, k6, kfb, k1, kfb, k6, kfb, k4. 28 sts
- Row 11: k4, kfb, k7, kfb, k1, kfb, k7, kfb, k5. 32 sts
- Beg with a p row, work three rows in st st
- Cast off

BODY LEFT SIDE

Front leg

Using 3.75mm needles and yarn N, cast on ten sts

- Beg with a k row, work four rows in st st
 - Next row: kfb, k to end. 11 sts
 - P to end
 - Rep last two rows once more. 12 sts
 - With RS facing, cast on 14 sts using cable cast on method. 26 sts
- Cut yarn and leave sts on spare needle

Back leg

Using 3.75mm needles and yarn N, cast on ten sts

- Beg with a k row, work four rows in st st
- Next row: k to last st, kfb. 11 sts
- P to end
- Next row: kfb, k to last st,

- kfb. 13 sts
- P to end

Join legs

- Next row: k 13 sts of Back leg, with RS facing k 25 sts of Front leg, kfb in last st. 40 sts
- P to end
- Next row: kfb, k to last st, kfb. 42 sts
- P to end
- Inc one st at end of next and foll three alt rows. 46 sts
- Beg with a p row, work five rows in st st
- Next row: skpo, k to end. 45 sts
- P to end
- Rep last two rows three times more. 42 sts

Create neck and head

- Next row: cast off 21 sts, k to end. 21 sts
- Next row: p to last two sts, p2tog. 20 sts
- Next row: skpo, k to end. 19 sts
- Next row: p to last two sts, p2tog. 18 sts
- Beg with a k row, work 20 rows in st st
- Next row: skpo, k to end. 17 sts
- P to end
- Next row: skpo, k to end. 16 sts
- Next row: p2tog, p to end. 15 sts
- Next row: skpo, k to last two sts, k2tog. 13 sts
- Rep last two rows once more. Ten sts
- P to end
- Cast off

BODY RIGHT SIDE

Back leg

Using 3.75mm needles and yarn N, cast on ten sts

- ** Beg with a k row, work four rows in st st
 - Next row: kfb, k to end. 11 sts
 - P to end
 - Next row: kfb, k to last st, kfb. 13 sts
 - P to end
 - With RS facing, cast on 14 sts using cable cast on method. 27 sts
- Cut yarn and leave sts on spare needle

Front leg

Using 3.75mm needles and yarn N, cast on ten sts

- Beg with a k row, work four rows in st st
- Next row: k to last st,

- kfb. 11 sts
- P to end
- Rep last two rows once more. 12 sts

Join legs

- Next row: kfb, k 11 sts of front leg, with RS facing, k 27 sts of back leg. 40 sts
- P to end
- Next row: kfb, k to last st, kfb. 42 sts
- P to end **
- Inc one st at beg of next and foll three alt rows. 46 sts
- Beg with a p row, work five rows in st st
- Next row: k to last two sts, k2tog. 45 sts
- P to end
- Rep last two rows three times more. 42 sts
- K to end

Create neck and head

- Next row: cast off 21 sts, p to end. 21 sts
- Next row: k to last two sts, k2tog. 20 sts
- Next row: p2tog, p to end. 19 sts
- Next row: k to last two sts, k2tog. 18 sts
- Beg with a p row, work 19 rows in st st
- Next row: k to last two sts, k2tog. 17 sts
- P to end
- Next row: k to last two sts, k2tog. 16 sts
- Next row: p to last two sts, p2tog. 15 sts
- Next row: skpo, k to last two sts, k2tog. 13 sts

Stuffing A TOY

To successfully stuff your knitted toy, it is essential that you tease out your stuffing beforehand. This will prevent unsightly lumps and bumps. Take your time. You need to strike the perfect balance between over and under stuffing, so don't be afraid to start again if your toy doesn't sit right. Finally, make use of a smaller needle, to help you to reach awkward areas such as the arms and feet.



- Rep last two rows once more. Ten sts
- P to end
- Cast off

BODY GUSSET Inside back leg

- Using 3.75mm needles and yarn N, cast on ten sts
- Work as given for Body Right Side from ** to **
 - Next row (RS): kfb, k to end. 43 sts
 - P to end
 - Next row: kfb, k to last two sts, kfb. 45 sts
 - P to end
 - Next row: kfb, k to end. 46 sts
 - Next row: p to last st, pfb. 47 sts
 - Next row: skpo, k to end. 46 sts
 - Next and all WS rows: p to end
 - Next RS row: skpo, k to end. 45 sts
 - Next RS row: skpo, k to last two sts, k2tog. 43 sts

- Next RS row: skpo, k to end. 42 sts
- Next RS row: skpo, k to last two sts, k2tog. 41 sts
- P to end

Divide for legs

- Next row: skpo, k11, cast off next 14 sts, k to end. 26 sts
- Work on these 13 sts for inside back leg first as follows:
 - Next row: p2tog, p9, p2tog. 11 sts
 - K to end
 - Next row: p to last two sts, p2tog. Ten sts
 - Beg with a k row, work four rows in st st
 - Cast off
 - With WS facing, rejoin yarn to rem 12 sts of inside front leg
 - Next row: p2tog, p to end. 11 sts
 - K two rows
 - Next row: p2tog, p to end. Ten sts
 - Beg with a k row, work four

- rows in st st
- Cast off

TAIL

- Using 3.75mm needles and yarn N, cast on six sts
- Beg with a k row, work four rows in st st
 - Next row: skpo, k2, k2tog. Four sts
 - P to end
 - Next row: kfb, k2, kfb. Six sts
 - Beg with a p row, work three rows in st st
 - Cast off

OUTER EAR (make two)

- Using 3.75mm needles and yarn N, cast on six sts
- Beg with a k row, work four rows in st st
 - Next row: skpo, k2, k2tog. Four sts
 - Next row: (p2tog) twice. Two sts
 - Next row: k2tog. One st
 - Fasten off, leaving a long tail

INNER EAR (make two)

- Using 3.25mm needles and yarn B, cast on six sts
- Beg with a k row, work four rows in st st
 - Next row: skpo, k2, k2tog. Four sts
 - Next row: (p2tog) twice. Two sts
 - Next row: k2tog. One st
 - Fasten off, leaving a long tail

HAT

NOTE: when changing colour don't cut each time, instead carry yarn up side edge as strands will be hidden in seam

- Using 3.75mm needles and yarn C, cast on 36 sts
- Work in two-row stripes in the following sequence: C, D, E, F
- K two rows
 - Next row (RS): k5, (k2tog, k10) twice, k2tog, k5. 33 sts
 - Next and all WS rows: p
 - Next RS row: k4, (k2tog, k9) twice, k2tog, k5. 30 sts
 - Next RS row: k4, (k2tog, k8) twice, k2tog, k4. 27 sts
 - Next RS row: k3, (k2tog, k7) twice, k2tog, k4. 24 sts
 - Next RS row: k3, (k2tog, k6) twice, k2tog, k3. 21 sts
 - Next RS row: k2, (k2tog, k5) twice, k2tog, k3. 18 sts
 - Next RS row: k2, (k2tog, k4) twice, k2tog, k2. 15 sts
 - Next RS row: k1, (k2tog, k3) twice, k2tog, k2. 12 sts
 - Next RS row: k1, (k2tog, k2) twice, k2tog, k1. Nine sts

- P to end
- Change to yarn E
- Next row: (k2tog, k1) three times. Six sts
- P to end
- Cut yarn, leaving a tail, thread through rem sts, pull up tightly and fasten off

GARLAND

- Using 3.75mm needles and yarn G, cast on 70 sts using long tail cast on method
- Cast off

BLANKET

- Using 3.75mm needles and yarn G, cast on 21 sts
- K two rows
- Using Fair Isle technique, work from Chart (overleaf) or written instructions below
- NOTE: letter foll instruction indicates yarn shade**
- Row 3: k2 H, (k5 I, k1 H) three times, k1 H
 - Row 4: p2 H, (p5 I, p1 H) three times, p1 H
 - Row 5: k3 H, (k3 I, k3 H) to end

- Row 6: p3 H, (p3 l, p3 H) to end
- Row 7: k4 H, (k1 l, k5 H) twice, k1 l, k4 H
- Row 8: p4 H, (p1 l, p5 H) twice, p1 l, p4 H
- Change to yarn J
- Beg with a k row, work two rows in st st
- Change to yarn K
- K to end
- Change to yarn E
- Beg with a p row, work two rows in st st
- Row 14: p2 L, (p5 C, p1 L) three times, p1 L
- Row 15: k2 L, (k5 C, k1 L) three times, k1 L
- Row 16: p3 L, (p3 C, p3 L) three times
- Row 17: k3 L, (k3 C, k3 L) three times
- Row 18: p4 L, (p1 C, p5 L) twice, p1 C, p4 L
- Row 19: k4 L, (k1 C, k5 L) twice, k1 C, k4 L
- Change to yarn l
- Beg with a p row, work two rows in st st
- Change to yarn K
- P to end
- Change to yarn H
- Beg with a k row, work two rows in st st
- Row 25: k2 F, (k5 D, k1 F) three times, k1 F
- Row 26: p2 F, (p5 D, p1 F) three times, p1 F
- Row 27: k3 F, (k3 D, k3 F) to end
- Row 28: p3 F, (p3 D, p3 F) to end
- Row 29: k4 F, (k1 D, k5 F) twice, k1 D, k4 F
- Row 30: p4 F, (p1 D, p5 F) twice, p1 D, p4 F
- Rows 31-32: rep Rows 29-30
- Rows 33-34: rep Rows 27-28
- Row 35-36: rep Rows 25-26
- Change to yarn H
- Beg with a k row, work two rows in st st
- Change to yarn K
- K to end
- Change to yarn l
- Beg with a p row, work two rows in st st
- Rows 42-43: rep Rows 18-19
- Rows 44-45: rep Rows 16-17
- Rows 46-47: rep Rows 14-15
- Change to yarn E
- Beg with a p row, work two rows in st st
- Change to yarn K
- P to end
- Change to yarn J
- Beg with a k row, work two rows in st st
- Rows 53-54: rep Rows 7-8
- Rows 55-56: rep Rows 5-6
- Rows 57-58: rep Rows 3-4



Change to yarn G

- K two rows
- Cast off

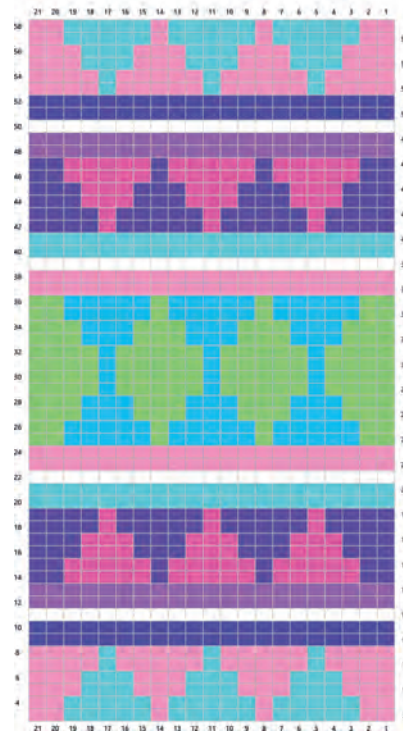
TO MAKE UP

With RS together, sew inside legs of gusset to each leg at sides matching shapings, leaving lower edges open. Continue to sew each half of body gusset to lower edges of body, matching shapings. Sew rest of centre back and centre back neck seam and top of head seam to front edge. Sew centre front neck seam up from point of gusset by 4cm. Turn right side out. With RS together, oversew cast-on edges of each leg, then turn right side out and sew remaining centre back seam using mattress stitch. Stuff each leg then place top edges of each leg inside bottom leg openings of body so fluffy fabric overlaps smooth fabric slightly. Sew in place securely. Sew cast-on edges and lower seam of Nose. Stuff, then place centre top increases of Nose in line with top seam of head. Sew front edges of head (fluffy fabric overlapping smooth fabric slightly) down each side to bottom seam of Nose securely. Stuff into top of head well. Insert toy eyes just in fluffy fabric where it meets Nose seam as shown. Using yarn A, embroider a nose and mouth as shown. Stuff all of body, head and neck well through opening in neck, making sure not to push

down too much between both sets of legs. If required to make toy stand, sew a few stitches between inside front legs and inside back legs to pull them towards each other and push up body gusset in these places. Sew gap in neck seam shut. With right sides together, fold tail in half at decrease point and sew down each side. Turn right side out and sew base of tail to end of llama's back as shown. With wrong sides together, oversew each Outer Ear to each Inner Ear down each side. Curve each ear slightly then sew top of llama's head. Using yarn left at top of Hat, sew centre back seam from point down. Make a pom-pom approximately 1.75cm in diameter from yarn F and attach to point of Hat. Sew each end of Garland together to form a ring. Make one pom-pom approximately 1.75cm in diameter each from yarn F, yarn D, yarn E, yarn C, yarn J and yarn I. Sew pom-poms evenly spaced around Garland. For fringing; cut four 8cm lengths each of yarn M and yarn L, and two lots of four 8cm lengths each of yarn H and yarn G. In between each pom-pom, attach fringing to Garland as shown. On Blanket, fold last two stitches on each side under to wrong side and oversew in place down each

long edge. Using yarn M yarn, cut eight lots of two 7cm lengths for each end of Blanket. Attach fringing to each end of Blanket **LK**

BLANKET CHART



- | | |
|-----------------------------------|------------------------------------|
| <input type="checkbox"/> RS: knit | <input type="checkbox"/> Orchid |
| <input type="checkbox"/> WS: purl | <input type="checkbox"/> Purple |
| <input type="checkbox"/> Pink | <input type="checkbox"/> Fuchsia |
| <input type="checkbox"/> Jade | <input type="checkbox"/> Lime |
| <input type="checkbox"/> Violet | <input type="checkbox"/> Turquoise |
| <input type="checkbox"/> white | |

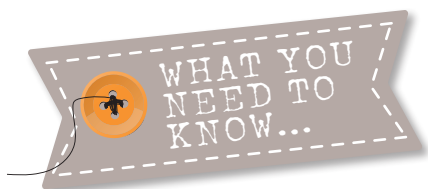
Chilly the REINDEER

SACHIYO ISHII'S DEER-LIGHTFUL PAL IS
WRAPPED UP WARM FOR WINTER

He may live with Father Christmas up at the North Pole but this is one reindeer who feels the cold. That's why he's all dressed up in his cosy jumper and stripy pom-pom scarf. The sweater is edged with soft, fleecy yarn but you could use a smooth yarn if you prefer. Label all the pieces as you knit them to make assembling your project easier.

EXCLUSIVE TO
**Let's
knit**
EXCLUSIVE TO





GREAT FOR IMPROVERS



DK YARN



3.5MM NEEDLES

MEASUREMENTS & SIZES

24cm tall

KNIT KIT

Yarn: Deramores Studio DK, shades (A) 70022 Gingerbread, (B) 70005 Raspberry, (C) 70011 Peridot, (D) 70024 Chocolate, one 100g ball of each, (E) Fleecy Chunky yarn, shade White, small amount

Needles: 3.5mm

Safety toy eyes: 8mm

Skewers: four

Safety toy stuffing

Stitch holder

Tapestry needle

TENSION SQUARE

■ 24 sts x 30 rows

■ 10cm x 10cm

■ Stocking stitch

■ 3.5mm needles

FOR ABBREVIATIONS SEE PAGE 97

ABOUT THE YARN

Deramores Studio DK is an anti-pilling acrylic yarn that comes in over 50 colour options. It's soft, smooth and easy to knit with so is a good choice for a variety of makes. It costs £1.95 per 100g (250m) ball from deramores.com

20% OFF WHEN YOU SPEND OVER £30 AT DERAMORES. USE THE CODE **LKSCW**

NEED AN ALTERNATIVE?

Head to your local yarn shop to check out the range of DK yarns in store!

great ADVICE



"Skewers are inserted to make our reindeer stand upright. If you are giving this to a young child as a toy, please omit the skewers. If you do not wish to use safety eyes, embroider the eyes with black yarn!"

LK DESIGNER, *Sachiyo Ishii*



BODY

Using 3.5mm needles and yarn A, cast on 12 sts

- Row 1 and all WS rows: p to end
- Row 2: (kfb) to end. 24 sts
- Row 4: (k1, kfb) to end. 36 sts
- Row 6: (k5, kfb) three times, (kfb, k5) three times. 42 sts
- Row 8: (k6, kfb) three times, (kfb, k6) three times. 48 sts
- Rows 9-15: beg with a p row, work in st st
- Cut yarn A, change to yarn E
- Row 16: k to end
- Rows 17-19: beg with a k row, work in st st
- Cut yarn E, change to yarn B
- Rows 20-29: beg with a k row, work in st st
- Row 30: k15, (k2tog, k1) six times, k15. 42 sts
- Rows 31-37: cont in st st
- Row 38: k12, (k2tog, k1) six times, k12. 36 sts
- Rows 39-43: cont in st st

Right front

- Row 44: k15, turn
- Cont on these 15 sts only
- Row 45: p to end
- Row 46: skpo, k to end. 14 sts
- Row 47: p to end
- Rows 48-49: rep Rows 46-47. 13 sts
- Row 50: skpo, cast off st on RH needle, cast off rem sts

Left front

Transfer next six sts onto a holder and rejoin yarn A to rem 15 sts

- Row 44: k to end
- Row 45: p to end
- Row 46: k to last two sts, k2tog. 14 sts
- Row 47: p to end
- Rows 48-49: rep Rows 46-47. 13 sts
- Row 50: cast off all sts to last two sts, k2tog
- Fasten off

NECK

- Using 3.5mm needles and yarn B, with RS facing, pick up and k 7 sts from right front neck edge, k6 from holder,

pick up and k 7 sts from left front neck edge. 20 sts

- Rows 1-5: beg with a p (WS) row, work in st st
- Row 6: (k3, k2tog) twice, (k2tog, k3) twice. 16 sts
- Rows 7-9: beg with a p row, work in st st
- Cut yarn B, change to yarn E
- Row 10: k to end
- Rows 11-13: beg with a k row, work in st st
- Cut yarn E, change to yarn A
- Rows 14-16: beg with a k row, work in st st
- Cast off

HEAD

Using 3.5mm needles and yarn A, cast on 12 sts

- Row 1 (WS): p to end
- Row 2: (kfb) to end. 24 sts
- Row 3: p to end
- Row 4: (k1, kfb) to end. 36 sts
- Row 5: p to end
- Row 6: (k5, kfb) to end. 42 sts
- Rows 7-15: beg with a p row, work in st st
- Row 16: (k2tog) three times, k30, (k2tog) three times. 36 sts
- Rows 17-27: cont in st st
- Row 28: (k2tog) six times, k12, (k2tog) six times. 24 sts
- Rows 29-31: cont in st st
- Row 32: (k2, k2tog) to end. 18 sts
- Row 33: p to end
- Row 34: (k1, k2tog) to

end. 12 sts

- Cut yarn leaving a tail, thread through rem sts, pull tight and fasten off

EARS (make two)

Using 3.5mm needles and yarn A, cast on ten sts

- Rows 1-3: beg with a p (WS) row, work in st st
- Row 4: k2, (k2tog, k2) to end. Eight sts
- Row 5: p to end
- Row 6: (k2tog) to end. Four sts
- Cut yarn leaving a tail, thread through rem sts, pull tight and fasten off

NOSE

Using 3.5mm needles and yarn D, cast on six sts

- Row 1 (WS): p to end
- Row 2: (kfb) to end. 12 sts
- Rows 3-5: beg with a p row, work in st st
- Row 6: (k2tog) to end. Six sts
- Cut yarn leaving a tail, thread through rem sts, pull tight and fasten off

TAIL

Using 3.5mm needles and yarn A, cast on ten sts

- Rows 1-3: beg with a p (WS) row, work in st st
- Row 4: k2, (k2tog, k2) to end. Eight sts
- Rows 5-7: beg with a p row, work in st st





"Use the yarn tails from each piece for sewing up. See page 96 for our stitching guides."

LK Deputy Editor,
Adrienne Chandler

Row 8: (k2tog) to end. Four sts
 Cut yarn leaving a tail, thread through rem sts, pull tight and fasten off

BACK LEGS (make two)

Using 3.5mm needles and yarn D, cast on nine sts
 Row 1 (WS): p to end
 Row 2: (kfb) to end. 18 sts
 Row 3: p to end
 Row 4 (edge): p to end
 Rows 5-8: beg with a p row,

work in st st
 Row 9 (edge): k to end
 Rows 10-13: beg with a k row, work in st st
 Row 14: k7, (k2tog) twice, k7. 16 sts
 Row 15: p to end
 Cut yarn D, change to yarn A
 Rows 16-31: cont in st st
 Cast off

FRONT LEGS (make two)

Work as for Back legs until Row 15 is complete. 16 sts
 Cut yarn D, change to yarn E
 Row 16: k to end
 Rows 17-19: beg with a k row, work in st st
 Cut yarn E, change to yarn B
 Rows 20-31: beg with a k row work in st st
 Cast off

MAIN ANTLER (make two)

** Using 3.5mm needles and yarn D, cast on ten sts
 Rows 1-7: beg with a p (WS) row, work in st st **
 Cut yarn, leave sts on a holder
 Rep from ** to **
 Row 8: (k2tog) twice, k2, (k2tog) twice, then work sts from holder as folls: (k2tog) twice, k2, (k2tog) twice. 12 sts
 Rows 9-23: beg with a p row,

work in st st
 Cast off

SIDE ANTLERS (make four)

Rep from ** to ** as for Main Antler
 Cut yarn leaving a tail, thread through rem sts, pull tight and fasten off

SCARF

Using 3.5mm needles and yarn C, cast on 14 sts
 Rows 1-4: beg with a p (WS) row, work in st st
 Change to yarn B
 Rows 5-6: cont in st st
 Keeping stripes correct, rep Rows 1-6 15 times more
 Change to yarn C
 Beg with a p row, work four rows in st st
 Cast off

BOBBLES (make eight)

Using 3.5mm needles and yarn C, cast on seven sts
 Cut yarn leaving a tail, thread through rem sts, pull tight and fasten off

TO MAKE UP

Using cast-on yarn tail of Body, gather cast-on edge and pull to gather. Sew tummy seam

halfway. Leave a gap, then sew remaining seam to neck edge. Stuff then close gap. Fold leg in half lengthways. Sew sole and side seam up to cast-off edge. Stuff leg. Thread yarn D onto tapestry needle and insert it through foot from sole. Take needle out from top of foot and repeat. Pull thread to flatten sole and shape ankle. Repeat for all legs. Sew legs to body. Using fastened-off yarn tail of Head, sew seam halfway. Gather cast-on edge and draw tightly. Attach safety eyes. Sew up to centre of Head, stuff, then close seam. Seam and stuff Nose and attach to face. Seam Main antler, then stuff. Seam each Side antler then stuff. Attach two side pieces to each Main Antler. Attach antlers to Head. Seam Ears and sew to Head. Using yarn D, embroider mouth. Attach Head to Body. For stability, insert a skewer through neck and head. Insert skewers into legs. Seam and attach Tail. Stitch ends of Bobbles together. Sew Scarf seam and attach four Bobbles on each end. Wrap Scarf around neck **LK**

Using stitch HOLDERS

Stitch holders look like giant safety pins and you can use them to stop your stitches unravelling while you are working on a different section. Open up the holder and insert the bar into your stitches as if you were going to purl them, then slide them off your needle onto the holder. Later on, you'll be able to knit these stitches straight from the holder.

WHAT YOU
NEED TO
KNOW...

MEASUREMENTS & SIZES

Seated: 16.5cm tall **Standing:** 24cm tall

KNIT KIT

Yarn: DK, shades (A) Beige, (B) Red, one 20g ball of each, (C) Green, one 25g ball, (D) White, one 10g ball, with this issue of LK

Bells: gold, two, with this issue of LK

YOU'LL ALSO NEED:

Needles: 3mm, 3.25mm

Safety toy stuffing

Beads: black, four

Embroidery cotton: purple

Ribbon, Felt, Tapestry needle

FOR ABBREVIATIONS SEE PAGE 97
OF MAIN MAGAZINE

JINGLE

and Tinsel

KNIT STEFFI HOCHFELLNER'S ADORABLE
ELVES WITH YOUR YARN PACK

This jolly duo are the perfect toys for Christmas. They're happy, smiley and tinkle as they go thanks to the addition of little golden bells. The pattern is straightforward to make, although there is a fair amount of shaping and you'll get to try simple colourwork with the easy stripe sequence. Don't forget to practise embroidering the faces before committing to your toy.

Start knitting here...

BODY

NOTE: for second elf, work in yarn C only
Using 3mm needles and yarn B (C), cast on seven sts

- Row 1 (WS): p to end
- Row 2 (RS): k1, (kfb) to end. 13 sts
- Work in foll two-row stripe sequence:
yarn D, yarn B
- Row 3: p to end
- Row 4: k1, (kfb, k1) to end. 19 sts
- Row 5: p to end
- Row 6: k1, (kfb, k2) to end. 25 sts
- Row 7: p to end
- Row 8: k1, (kfb, k7) to end. 28 sts
- Rows 9-13: cont in st st
- Row 14: k5, k2tog, k1, ssk, k8, k2tog, k1, ssk, k5. 24 sts
- Rows 15-17: cont in st st
- Row 18: k4, k2tog, k1, ssk, k6, k2tog, k1, ssk, k4. 20 sts
- Rows 19-21: cont in st st
- Row 22: k3, k2tog, k1, ssk, k4, k2tog, k1, ssk, k3. 16 sts

- Rows 23-25: cont in st st
- Row 26: k2, k2tog, k1, ssk, k2, k2tog, k1, ssk, k2. 12 sts
- Row 27: p to end
- Row 28: k to end
- Cast off, leaving a 40cm tail



Weave in ends. Using yarn tail, sew centre back seam with mattress stitch. Stuff Body very firmly until elf has a nice round belly

ARMS (make two per elf)

NOTE: for second elf, work Rows 1-15 in yarn C only

Using 3mm needles and yarn B (C), cast on eight sts

Row 1 (WS): p to end

Work in foll two-row stripe sequence: yarn D, yarn B

Rows 2-15: beg with a k row, work in st st

Change to yarn A

Next row: k to end

Next row: p to end

Next row: (kfb, k1) to end. 12 sts

Beg with a p row, work five rows in st st

Next row: (k1, k2tog) to end. Eight sts

Row 10 (WS): (p2tog, p2) to end. Six sts

Cut yarn leaving a tail, thread through rem sts, pull tight and fasten off

Use yarn tail to sew seam with mattress stitch. Stuff hands, but not sleeves

LEGS (make two per elf)

NOTE: for second elf, work Rows 1-15 in yarn C only

Using 3mm needles, cast on eight sts

Work Rows 1-15 as for Arms

Cast off

Sew seam but don't stuff

SHOES (make two each in yarns B and C)

Using 3mm needles, cast on 18 sts

Row 1 (WS): p to end

Row 2 (RS): (kfb, k6, kfb, k1) twice. 22 sts

Rows 3-5: beg with a p row, work in st st

Row 6: k12, ssk, turn. 21 sts

Row 7: sl 1, p2, p2tog, turn. 20 sts

Row 8: sl 1, k2, ssk, turn. 19 sts

Row 9: sl 1, p2, p2tog, turn. 18 sts

Row 10: sl 1, k2, ssk, turn. 17 sts

Row 11: sl 1, p2, p2tog, turn. 16 sts

Row 12: sl 1, k2, ssk, turn. 15 sts

Row 13: sl 1, p2, p2tog, turn. 14 sts

Row 14: sl 1, k2, ssk, k to end. 13 sts

Row 15: p7, p2tog, p to end of row. 12 sts

Rows 16-19: beg with a k row, work in st st

Change to 3.25mm needles

Rows 20-23: cont in st st

Cast off

EYE Placement

Mark the position of the eyes with pins. To form eye sockets, using yarn A, insert a tapestry needle at the position of the right eye and exit at the position of the left eye. Insert the needle one stitch next to the exit point and bring it back close to the starting point of the right eye. Pull to create dimples for sockets and knot to secure. Attach eye beads using a similar method.



Close seam in back of leg and under sole. Stuff Shoe, leaving ankle section unstuffed. Insert Leg into Shoe. Stitch base of ankle section to Row 15 of Leg. Fold over top of Shoe as shown and secure turn back

HAT

NOTE: for second hat, work in yarn C only

Using 3mm needles and yarn B (C), cast on 35 sts

Rows 1-3: beg with a p row, work in st st

Work in foll two-row stripe sequence: yarn D, yarn B

Row 4: (k5, k2tog) to end. 30 sts

Rows 5-7: cont in st st

Row 8: (k4, k2tog) to end. 25 sts

Row 9-11: cont in st st

Row 12: (k3, k2tog) to end. 20 sts

Rows 13-15: cont in st st

Row 16: (k2, k2tog) to end. 15 sts

Rows 17-19: cont in st st

Row 20: (k1, k2tog) to end. Ten sts

Rows 21-23: cont in st st

Row 24: (k2tog) to end. Five sts

Row 25: p to end

Cut yarn leaving a tail, thread through rem sts, pull tight and fasten off

Close seam with mattress stitch

HEAD

Using 3mm needles and yarn A, cast on 13 sts

Row 1 and all WS rows: p to end

Row 2: k1, (kfb, k1) to end. 19 sts

Row 4: k1, (kfb, k2) to end. 25 sts

Row 6: k1, (kfb, k3) to end. 31 sts

Rows 7-19: cont in st st

Row 20 (RS): (k3, k2tog) six times, k1. 25 sts

Row 22: (k2, k2tog) six times, k1. 19 sts

Row 24: (k1, k2tog) six times, k1. 13 sts

Row 26: (k2tog) six times, k1. Seven sts

Cut yarn leaving a 40cm tail, thread through rem sts, pull tight and fasten off Use tail to close seam with mattress stitch, leaving neck open. Stuff head firmly and shape

TO MAKE UP

Sew bead eyes to Head (see panel). For nose, embroider three stitches close to each other over four knitted stitches in middle of Head.

Work satin stitches vertically over these horizontal stitches. Using purple cotton, embroider mouth, using photo as a guide. For the cheeks, use blusher or crayons. Attach Head to Body. Sew Hat to Head. Attach bells to tip of Hat. Sew Arms to Body. Pin Legs to Body in sitting or standing position, then sew in place. Cut a collar from felt and sew to neckline. Tie ribbon around neck of second elf, fastening in a bow **LK**

Triumphant TRIO

KNIT THIS SMART
COLLECTION
OF CHARACTERS!

Designed by the fantastic Zoë Halstead, these Toy Soldiers would make a wonderful addition to your collection of Christmas decorations. Even novice knitters should give this pattern a go, as it is much easier than it looks! All three soldiers are worked in the same way, with the only difference being the shades of yarn that you are using. Then, it is just a matter of knitting the stylish hats and decorative drums!

Decs with a
DIFFERENCE!



EXCLUSIVE TO • EXCLUSIVE TO • EXCLUSIVE TO •
let's knit
EXCLUSIVE TO • EXCLUSIVE TO • EXCLUSIVE TO •



MEASUREMENTS & SIZES

19cm tall

KNIT KIT

Yarn: King Cole Pricewise DK, shades (A) 048 Black, (B) 001 White, (C) 3103 Admiral, (D) 1740 Mustard, (E) 022 Jade, one 100g ball of each, King Cole Dollymix DK, shades (F) 149 Blush, (G) 009 Red, (H) 037 Taupe, one 25g ball of each

Needles: 3.25mm

Tapestry needle

Safety toy stuffing

Embroidery thread: black, white, pink

TENSION SQUARE

■ 24 sts x 32 rows

■ 10cm x 10cm

■ Stocking stitch

■ 3.25mm needles

FOR ABBREVIATIONS SEE PAGE 113

ABOUT THE YARN

King Cole Pricewise DK is 100% acrylic and machine washable. Easy to care for and available in a wide range of colours, this versatile yarn would work for a number of projects. It costs £1.52 per 100g (282m) ball from **01795 570303**, theknittingnetwork.co.uk

NEED AN ALTERNATIVE?

Stylecraft Special DK is an extremely popular acrylic yarn. Choose from a wide range of shades as you explore the extensive range of colours. This practical fibre costs £1.92 per 100g (295m) ball from **01789 610695**, wisebadger.com

A local yarn shop is a great place to buy all your knitting essentials.

LOVE YOUR YARN SHOP

Start knitting here...

SOLDIER

NOTE: soldiers worked from bottom up

Using 3.25mm needles and yarn A, cast on 18 sts

- Row 1: p
- Row 2: [k1, kfb] four times, k2, [kfb, k1] four times. 26 sts
- Row 3: p
- Row 4: kfb, k1, kfb, k5, [kfb, k1] twice, [kfb] twice, [k1, kfb] twice, k5, kfb, k1, kfb. 36 sts
- Rows 5-7: beg with a p row, work three rows in st st
- Row 8: k8, [k2tog] ten times, k8. 26 sts
- Row 9: p

Change to yarn B (C, C)

- K two rows
- Beg with a k row, work 12 rows in st st

Change to yarn C (G, E)

- K two rows
- Beg with a k row, work two rows in st st

Change to yarn A

- Beg with a k row, work two rows in st st

Change to yarn C (G, E)

- Beg with a k row, work eight rows in st st

Shape shoulders

- Next row: k6, k2tog, k10, k2tog, k6. 24 sts
- P one row
- Next row: k5, k2tog, k10, k2tog, k5. 22 sts
- P one row
- Next row: k5, k2tog, k8, k2tog, k5. 20 sts
- Next row: [p2tog] to end. Ten sts

Change to yarn H (F, F)

- K one row
- Next row: pfb in every st. 20 sts
- Beg with a k row, work ten rows in st st

Shape top of head

- Next row: [k2tog, k2] five times. 15 sts
- P one row
- Next row: [k2tog, k1] five times. Ten sts
- Next row: [p2tog] five times. Five sts
- Cut yarn, leaving a length for making up, thread through rem sts, pull tight and fasten off

ARM (make two)

- Using 3.25mm needles and yarn B, cast on ten sts
- Beg with a k row, work five rows in st st
 - Change to yarn D
 - P one row
 - Change to yarn C (G, E)
 - Beg with a k row, work ten rows in st st
 - Change to yarn D (G, E)
 - Beg with a k row, work two rows in st st
 - Next row: (k2tog) to end. Five sts
 - Cut yarn, leaving a long tail, thread through rem sts, pull tight and fasten off

HAT (make three)

- Using 3.25mm needles and yarn A, cast on 25 sts
- K two rows
 - Beg with a k row, work ten rows in st st
 - Next row: k1, [k2tog, k2] six times. 19 sts
 - P one row
 - Next row: k1, [k2tog, k1] six times. 13 sts
 - P one row
 - Next row: k1, [k2tog] six times. Seven sts
 - Cut yarn, leaving a long tail, thread through rem sts, pull tight and fasten off

CHIN STRAP (make three)

- Using 3.25mm needles and yarn D, cast on 18 sts using long tail cast on method
- Cast off

SMALL DRUM

NOTE: this Drum is for the soldier in the red jacket

- Using 3.25mm needles and yarn B, cast on six sts
- Row 1: p
 - Row 2: kfb in every st. 12 sts
 - Row 3: p
 - Row 4: (kfb, k1) six times. 18 sts
 - Row 5: p
 - Change to yarn G
 - K two rows
 - Beg with a k row, work eight rows in st st
 - K two rows
 - Change to yarn B
 - ** K one row
 - Next row: [p2tog, p1] six times. 12 sts
 - K one row
 - Next row: [p2tog] six times. Six sts
 - K one row
 - Cut yarn, leaving a long yarn tail, thread through rem sts, pull tight and fasten off





"If you decide to give this trio to a lucky loved one, why not see if you can knit one of the soldiers in their likeness? Perhaps the jacket could be their favourite colour or maybe you could add in some hair?"

LK Editorial Assistant,
Libby Loughnan

shown. Using yarn tail at top of Hat, sew centre back seam. Using yarn D, embroider hat as shown. Stuff into top of Hat and put to one side. Embroider eyes in black thread. Sew small white highlight in each eye. Embroider mouth in pink thread as shown. Sew ends of Chin strap to either side of face. Place Hat over top of Chin strap ends and sew lower edge of Hat in place. To make Drums, gather up cast-on edge and sew seam of white section. Sew seam of white section on other side. Stuff well then sew seam of red section closed.

Weave yarn D through garter stitch ridges on each edge as shown. To make Drumsticks, using yarn tail at end, oversew end several times to form a ball. To make up soldier in red jacket, wrap strap across soldier like a sash. Sew ends of strap to side of Drum in position as shown. To make up soldier in green jacket, wrap Drum strap around neck of soldier and sew ends together at centre front. Turn Drum sideways and sew side of Drum to ends of Drum strap. Sew each Drumstick to hands. Lastly, sew hands of soldier to sides of Drum **LK**

LARGE DRUM

NOTE: this drum is for the soldier in the green jacket

Using 3.25mm needles and yarn B, cast on six sts

□ Rows 1-5: as Small Drum

□ Row 6: [kfb, k2] six

times. 24 sts

□ Row 7: p

Change to yarn G

□ K two rows

□ Beg with a k row, work six rows in st st

□ K two rows

Change to yarn B

□ K one row

□ Next row: [p2tog, p2] six times. 18 sts

□ Work as Small Drum from ** to end

□ Cut yarn, leaving long tail, thread through rem sts, pull tight and fasten off

DRUMSTICK (make two)

Using 3.25mm needles and yarn D, cast on eight sts

□ Cast off leaving a long yarn tail

DRUM STRAP (make two)

Using 3.25mm needles and yarn B, cast on 34 sts

□ K one row

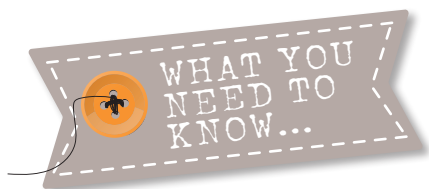
□ Cast off kwise

TO MAKE UP

Using yarn left at top of head, sew centre back seam down to neck. Stuff head well. Using yarn F or H as for head, sew running stitches around neck and pull slightly to cinch neck. Continue sewing centre back seam of jacket. Stuff jacket/body well. Using yarn D, embroider belt buckle and frogging detail as shown. Next, with RS together, fold cast-on edge of boots in half (from front to back) and sew seam. Then sew centre back seam of boots. Turn right side out. Stuff boots well, shaping into a foot shape. Sew centre back seam of trousers leaving a gap for stuffing. Stuff trousers well then sew gap closed. Using yarn B or C as for trousers, sew through stuffing and both layers at centre line to form two legs. Then, using yarn A, sew through all layers of boots for a small distance below bottom of trousers. Next, sew through from bottom of boots at centre line to form two shoes. Using yarn tail at top of each Arm, sew seam from top down. Stuff well then gather up cast on sts and sew shut. Sew each Arm to sides of body as

Sewing UP

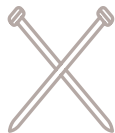
If you have lots of knitted pieces to sew up, it's important that you label your work as you go and leave a long yarn tail every time you cast off. To cinch the neck of your soldiers, you will need to use running stitch. This is the simple process of pushing the needle in and out of your work at small and regular intervals. For the rest of the soldier, you can either use mattress stitch or backstitch (see p110).



GREAT FOR IMPROVERS



DK YARN



4MM NEEDLES

MEASUREMENTS & SIZES

Height: 13cm

KNIT KIT

Yarn: Stylecraft Special DK, shades (A) 1002 Black, (B) 1005 Cream, (C) 1256 Jaffa (D) 1256 Lipstick (E) 1068 Turquoise, one 100g ball of each, (F) 1263 Citron (G) 1062 Teal, oddments

Needles: 4mm

Beads: 4mm, black, two

Felt: white, oddment

Thread: black

Safety toy stuffing

Pom-pom maker (optional)

Tapestry needle

TENSION SQUARE

■ 20.5 sts x 29 rows

■ 10cm x 10cm

■ Stocking stitch

■ 4mm needles

FOR ABBREVIATIONS SEE PAGE 97

ABOUT THE YARN

Stylecraft Special DK is machine washable on a gentle setting and can even be tumble dried. This 100% acrylic yarn is available in a selection of shades ranging from pretty pastels to jewel tones. It costs £1.95 per 100g (295m) from littlewoolshop.com

NEED AN ALTERNATIVE?

King Cole Big Value DK is available in a selection of solid and flecked shades. From Cornflower to Aubergine, there is a colour for everyone. A practical pick, it is easy to care for and costs £2.19 per 100g (290m) ball from smdknitting.com

SHOP
LOCAL

A LOCAL
YARN SHOP IS
A GREAT PLACE
TO BUY ALL
YOUR KNITTY
ESSENTIALS

Knit up A PENGUIN

YOUR LOVED ONES WILL GO FLIPPERS
FOR THIS DARLING DUO

Nicky Fijalkowska has done it again with these super-cute creations. They would work perfectly as stocking fillers or could even be placed on the mantelpiece to produce a delightful display. Requiring only small amounts of yarn, this project is a brilliant pick if you are looking to use up your stash and keep your costs as low as possible. If you decide to gift your finished penguins to a lucky little one, just remember to play it safe by switching out the beaded eyes for a practical embroidered alternative.

Start
knitting
here

BODY AND HEAD

NOTE: make one per penguin using alternative colourway as indicated

Using 4mm needles and yarn A, cast on five sts

Row 1: (kfb) in each st to end. Ten sts

Row 2: p

Row 3: (kfb) in each st to end. 20 sts

Row 4: p

Row 5: * kfb, k4, rep from * to end. 24 sts

Row 6: p

NOTE: letter foll instruction indicates yarn shade. Wind separate balls of yarn A to avoid stranding across back of yarn B section

Row 7: [kfb, k7] A, [k3, (kfb) twice, k3] B, [k7, kfb] A. 28 sts

Row 8: p9 A, p10 B, p9 A

Row 9: keeping colours correct, k to end

Row 10: keeping colours correct, p to end

Rows 11-22: rep Rows 9-10

Row 23: k10 A, k8 B, k10 A

Cont in yarn A only

Rows 24-32: beg with a p row work eight rows in st st

Change to yarn F (G)

Row 33-34: k

Change to yarn D (E)

Row 35: k

Row 36: p

Row 37: * k5, k2tog, rep from * to end. 24 sts

Row 38: p

Row 39: * k4, k2tog, rep from * to end. 20 sts

Row 40: p

Row 41: (k2tog) to end. Ten sts

Cut yarn, leaving a long tail, thread through rem sts, pull tight and fasten off

SCARF (make one per penguin)

Using 4mm needles and

yarn D (E), cast on four sts

Work in garter st for 26cm

Cast off

FLIPPER (make two per penguin)

Using 4mm needles and yarn

A, cast on eight sts

Rows 1-10: beg with a k row work ten rows in st st

Row 11: (k2tog) to end. Four sts

Four sts

Cut yarn, leaving a long tail, thread through rem sts, pull tight and fasten off



Stocking
FILLERS



FOOT (make two per penguin)
Using 4mm needles and yarn C, cast on four sts
□ Row 1-6: beg with a k row work six rows in st st
□ Cast off

BEAK (make one per penguin)
Using 4mm needles and yarn C cast on four sts
□ Row 1-4: beg with a k row work four rows in st st
□ Cast off

TO MAKE UP
Sew up Body and head seam from top to bottom, stuffing as you go. Run a thread through cast-on stitches at bottom of Body and pull tight to close. To create neck, run thread of yarn A through Row 25 of Body (two rows above where chest ends). Pull tight and knot to secure. Sew up side seam on each Flipper and sew into position on Body. Fold each Foot in half so cast-on edge meets cast-off edge. and sew up seams. Sew onto bottom of Penguin, at front. Sew Scarf into position around neck. Fold Beak in half so cast-on edge meets cast-off edge. and sew up seams. Sew Beak onto face. Cut two circles of felt a little larger than black beads. Sew beads and felt onto face for eyes. Use a pom-pom maker to create a small pom-pom out of yarn D (E) and sew into position on top of Hat **LK**

Great discounts with...

Let's knit together

TREAT YOURSELF THIS XMAS

WIN BIG & SAVE BIG!

Looking for even more giveaways and discounts? As a member of our online knitting community, you'll be the first to hear about exclusive voucher codes and competition prizes.

ONLINE KNIT SCHOOL

1,900+ PATTERNS

SECRET FACEBOOK GROUP

Join the UK's friendliest knitting community!
LETSKNIT.CO.UK/TOGETHER